

KISELEFF - 2 bedrooms penthouse apartment
118sqm terrace

3,500 € / lună



GENERAL INFORMATION

- 3 rooms
- level: 5 / 1S+P+5E
- construction year: 2010

AREAS

- built: 310 sqm
- usable: 174 sqm

CONTAINS

- 2 bedrooms
- 3 bathrooms

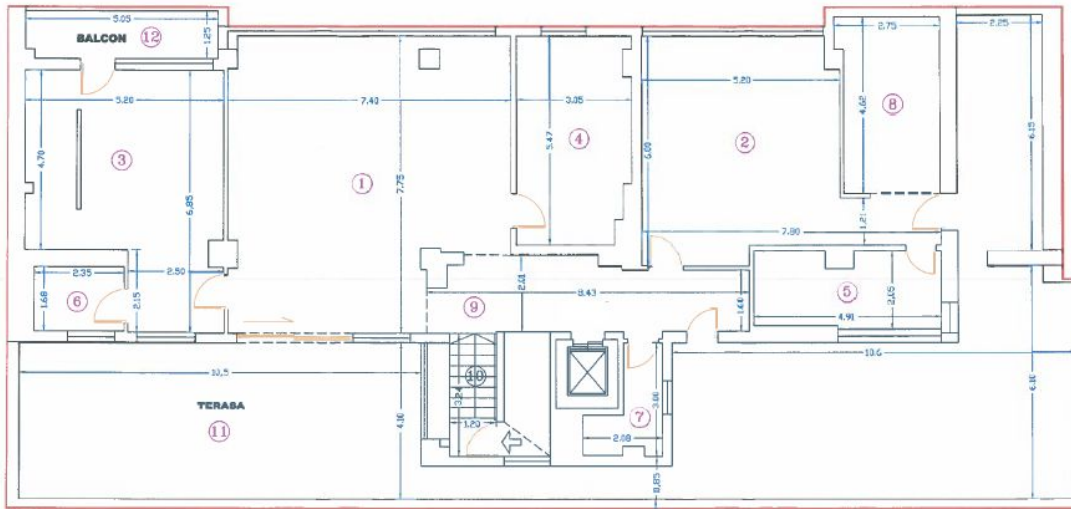
Utilities

air conditioning, stove, shower, bathtub, dressing room, fridge, kitchen hood, washing machine, dishwasher, alarm system, partially furnished, radiators, central heating, closed kitchen, furnished kitchen, equipped kitchen, water meters, heating meter, electricity meter, gas meter, shared yard, elevator, service closet

Property details

Located in one of the most beautiful residential compound in the North area, this apartment is on the 2nd floor of a 4 levels building and benefits from the proximity of the facilities of the Kiseleff area as well as privacy and security. It has a built surface of 310sqm of which 174sqm usable and 118sqm terraces. It consists of living room with dining area and exit on the terrace, furnished and fully equipped kitchen, guest toilet and 2 bedrooms with en-suite bathrooms and dressing areas. It has 1 parking place in the underground garage. It has the advantage of being within a short distance of the facilities of the area (market, restaurants, parks, medical clinics), Charles de Gaulle metro station and a 10-minute drive from the city center.

➔ <https://ct.goldenkey.ro/en/property-2-bedrooms-penthouse-apartment-118sqm-terrace-residential-compound-cp1347918>



Nr. Incapere	Denumire Incapere	Suprafata utila [mp]
1	Camera de zi	51.97
2	Dormitor	32.65
3	Dormitor	29.18
4	Bucatarie	15.98
5	Baie	9.49
6	Baie	3.95
7	Baie	3.99
8	Dressing	11.75
9	Hai acces	15.10
Suprafata Utila		174.06
10	Casa scarii	3.89
11	Terasa	111.74
12	Balcon	6.25
Suprafata Totala		296.94