

AVIATORILOR - 3-4 bedrooms high-end finished, open view,
30sqm terraces, 2 garages
ID:279798

4,000 € / lună



GENERAL INFORMATION

- 4 rooms
- level: 2 / 1S+P+5E
- construction year: 2016

AREAS

- built: 250 sqm
- usable: 216 sqm

CONTAINS

- 3 bedrooms
- 3 bathrooms

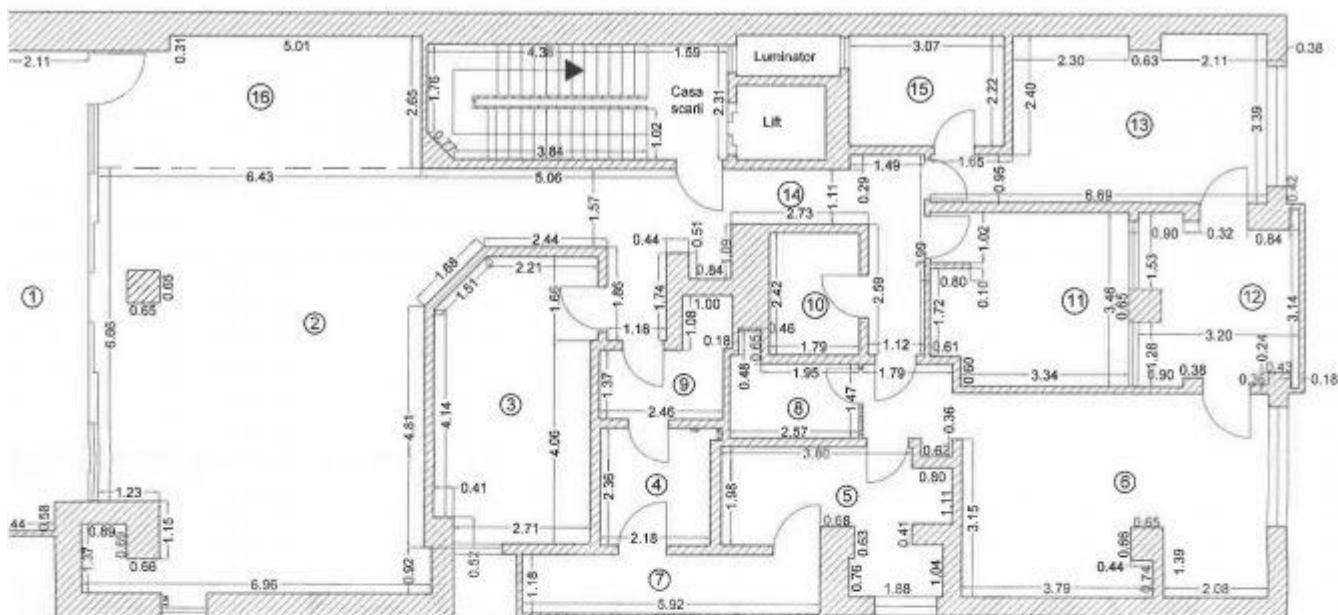
Utilities

air conditioning, stove, shower, bathtub, dressing room, fridge, kitchen hood, washing machine, dishwasher, tv, fully furnished, radiators, central heating, underfloor heating, open kitchen, furnished kitchen, equipped kitchen, water meters, heating meter, electricity meter, gas meter, underground storage, elevator, service closet

Property details

In Aviatorilor premium area, near Herastrau Park and Charles de Gaulle Square, this 3 bedrooms apartment is on the 2nd floor of a Ug+Gf+5 building completed in 2016. It is sunny, the glazed surfaces are very large. It has a total area of 250sqm of which 216sqm usable and 30sqm terraces. It consists of living room with generous dining room of 90sqm, open and fully equipped kitchen of 17sqm, terrace 18sqm, guest toilet with shower, master bedrooms with en-suite bathroom and dressing, 2 bedrooms which have been transformed into a children's room, dressing and laundryroom. All rooms have access to the terrace. The finishes are exceptional (aluminum joinery, triple-layered parquet with floor radiators, Roca and Grohe plumbing, multi-split air conditioning Daikin inverter, tempered glass railing on terraces). The price includes 2 underground garages and a storage. Given the quality of finishes, large glazed spaces and location, this building is one of the best options in the area.

➔ <https://ct.goldenkey.ro/en/property-3-4-bedrooms-high-end-finished-open-view-30sqm-terraces-2-garages-cp279798>



Numar incaperi	Denumire incaperi	Suprafata utila (mp)
2	Salon	90,00
3	Dormitor	17,32
4	Spalatorie	5,20
5	Baie	10,04
6	Dormitor	27,18
8	Dressing	4,10
9	Baie	4,45
10	Baie	4,33
11	Dormitor	13,30
13	Dormitor	18,36
14	Hol	14,25
15	Baie	6,82
16	Bucatarie	16,60
Suprafata utila =		292,54
1	Balcon	19,88
7	Balcon	6,99
12	Balcon	10,56
Suprafata totale =		239,97
Executant		Data
S.C. ReGe CAD S.R.L. prin		10.11.2016
ing. Talpeanu Marian		
Semnatura si stampila		
Receptionist		Data
BRUZA MARIANA		



123876/2016