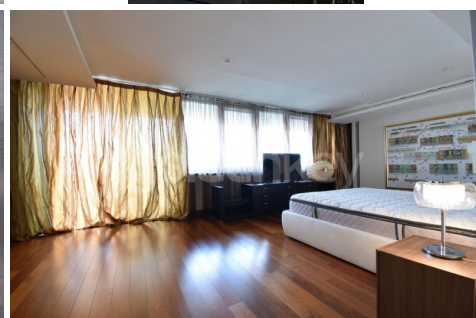
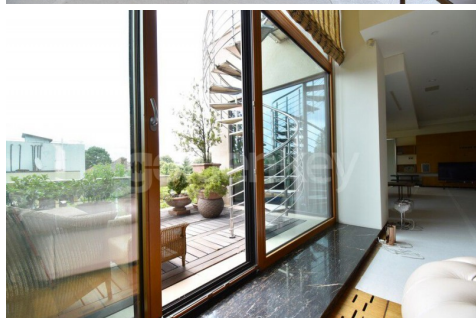
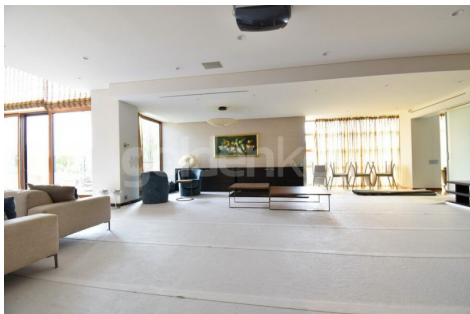
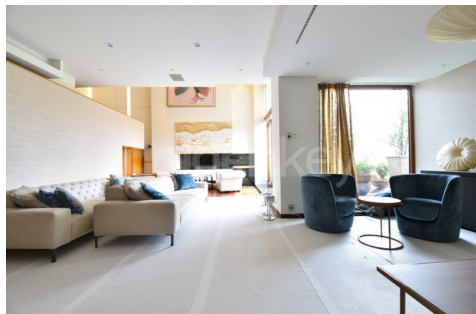


PRIMAVERII - 3 bedrooms duplex penthouse
2 garages

12,000 € / lună



GENERAL INFORMATION

- 4 rooms
- level: 4+5 / 1S+P+5E
- construction year: 2002

AREAS

- built: 500 sqm
- usable: 349 sqm

CONTAINS

- 3 bedrooms
- 4 bathrooms

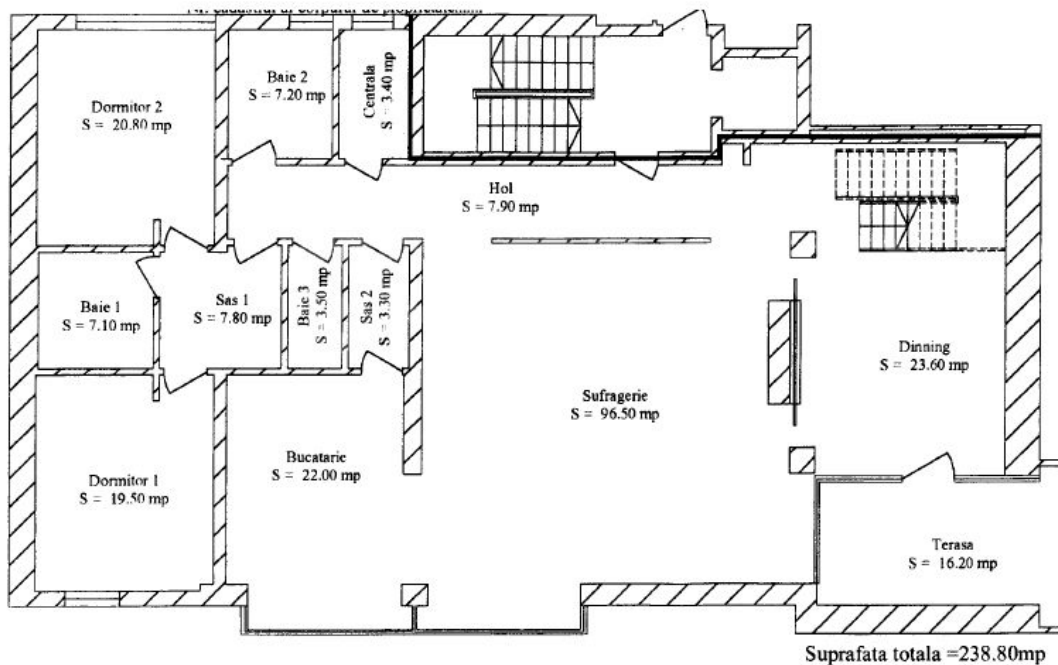
Utilities

air conditioning, stove, bidet, shower, bathtub, dressing room, fridge, kitchen hood, washing machine, dishwasher, staircase, fireplace, tv, partially furnished, radiators, central heating, closed kitchen, furnished kitchen, equipped kitchen, water meters, electricity meter, gas meter, sports facilities, elevator, sauna, service closet

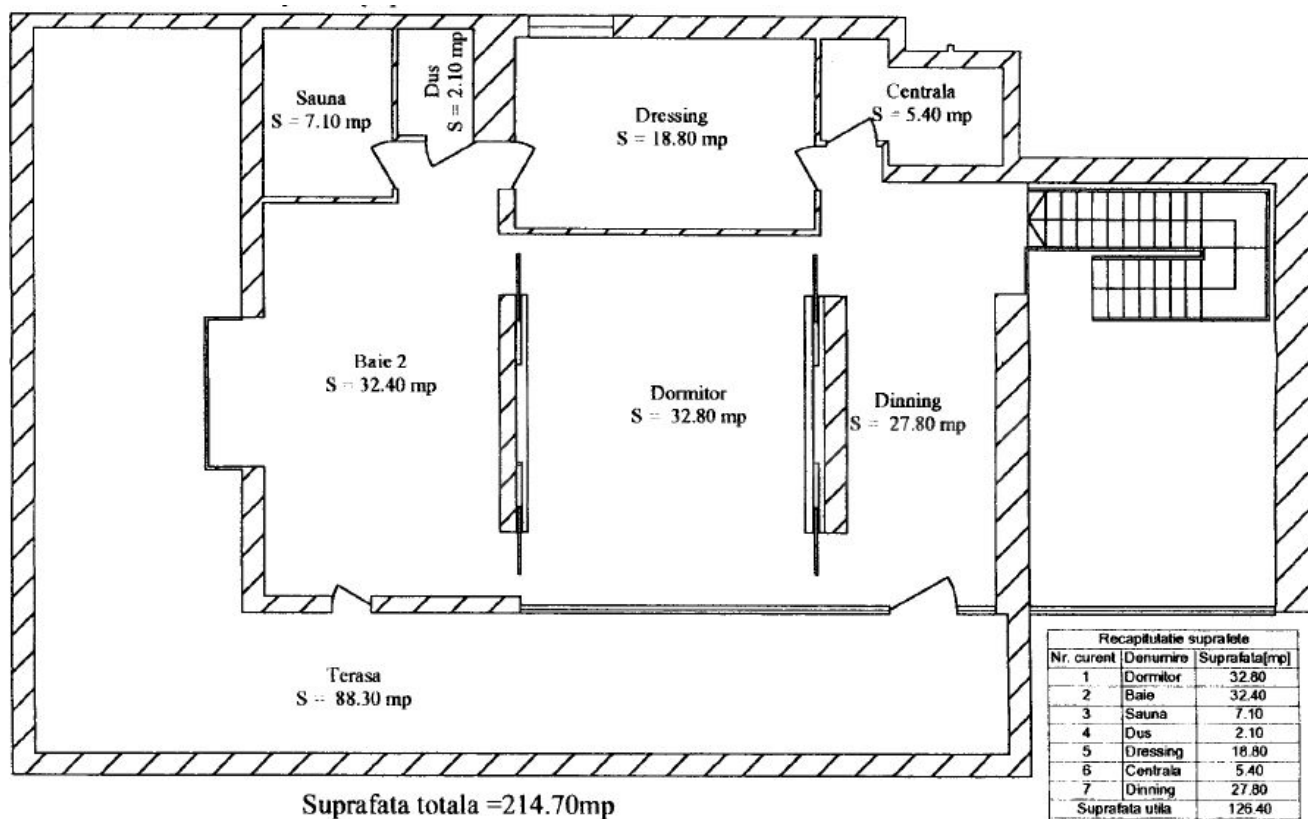
Property details

In the prestigious Primaverii area, close to Bordei and Herastrau Park, a few minutes from Aviatorilor metro station, this premium apartment occupies the last 2 floors of an Ug+GF+5 building. It has a built area of 500sqm of which 349sqm usable and 105sqm terraces. The 4th floor consists of a spacious living room with exit to the terrace, closed and fully equipped Miele kitchen, guest toilet, 2 bedrooms, 2 bathrooms and technical room. On the 5th floor there is a living area, master bedroom with private bathroom, dressing room, fitness, sauna, terrace and technical room. It has 2 underground parking places. The finishes are of the highest quality, the bathrooms with flooring and plywood made of natural stone / marble, Onyx. Given its location and facilities, it is suitable for residence.

<https://ct.goldenkey.ro/en/property-3-bedrooms-duplex-penthouse-2-garages-fitness-and-sauna-105sqm-terraces-cp1745745>



Recapitulatie suprafete		
Nr. curent	Denumire	Suprafata(mp)
1	Dormitor 1	19.50
2	Baie 1	7.10
3	Baie 2	7.20
4	Sufragerie	96.50
5	Sas 1	7.80
6	Dormitor 2	20.80
7	Sas 2	3.30
8	Hol	7.90
9	Bucatarie	22.00
10	Centrala	3.40
11	Dinning	23.60
12	Baie 3	3.50
Suprafata utila		222.60
13	Terasa	16.20
Suprafata totala		238.80



Recapitulatie suprafete		
Nr. curent	Denumire	Suprafata(mp)
1	Dormitor	32.80
2	Baie	32.40
3	Sauna	7.10
4	Dus	2.10
5	Dressing	18.80
6	Centrala	5.40
7	Dinning	27.80
Suprafata utila		126.40
8	Terasa	88.30
Suprafata totala		214.70