

HERASTRAU - Investment! Commercial space rented
220sqm
street

1,150,000 €



GENERAL INFORMATION

- 6 rooms
- level: floor Parter / 2S+P+6E
- construction year: 2009

AREAS

- built: 322 sqm
- usable: 217 sqm

CONTAINS

- bedrooms
- 2 bathrooms

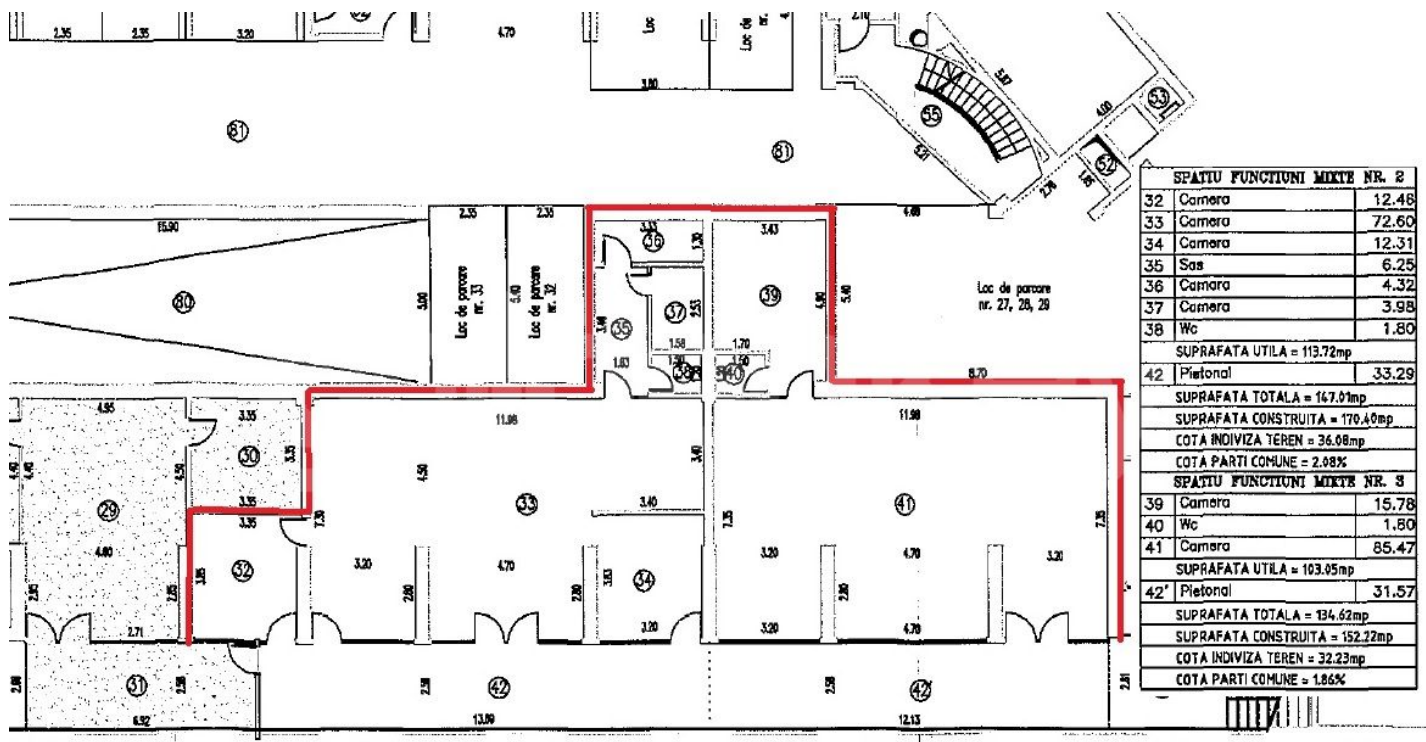
Utilities

traffic moderat, bloc de apart., 1 terase, water, sewage, electricity, gas

Property details

Located on the main street, just in front of Herastrau Park, this commercial space is located in a residential building completed in 2009. It has a total area of 322sqm, of which 217sqm is usable plus 65sqm terrace. It benefits from all the improvements (AC, three-phase, aluminum joinery). In the underground it has 2 parking spaces. It is suitable for clinic, supermarket, shop or offices. Currently is under contract until 1.03.2028.

➔ <https://ct.goldenkey.ro/en/property-investment-commercial-space-rented-220sqm-street-2-garages-cp2067351>



SPATIU FUNCTIONI MIXTE NR. 2	
32	Camera 12.48
33	Camera 72.60
34	Camera 12.31
35	Sas 6.25
36	Camera 4.32
37	Camera 3.98
38	Wc 1.80
SUPRAFATA UTILA = 113.72mp	
42	Pietonal 33.29
SUPRAFATA TOTALA = 147.01mp	
SUPRAFATA CONSTRUITA = 170.40mp	
COTA INDIVIZA TEREN = 36.08mp	
COTA PARTI COMUNE = 2.08%	
SPATIU FUNCTIONI MIXTE NR. 3	
39	Camera 15.78
40	Wc 1.80
41	Camera 85.47
SUPRAFATA UTILA = 103.05mp	
42'	Pietonal 31.57
SUPRAFATA TOTALA = 134.62mp	
SUPRAFATA CONSTRUITA = 152.22mp	
COTA INDIVIZA TEREN = 32.23mp	
COTA PARTI COMUNE = 1.86%	