

**AVIATIEI - Modern 2 bedrooms apartment  
near metro station**

**1,700 € / lună**



**GENERAL INFORMATION**

- 3 rooms
- level: 4 / 1S+P+9E
- construction year: 2009

**AREAS**

- built: 120 sqm
- usable: 100 sqm

**CONTAINS**

- 2 bedrooms
- 2 bathrooms

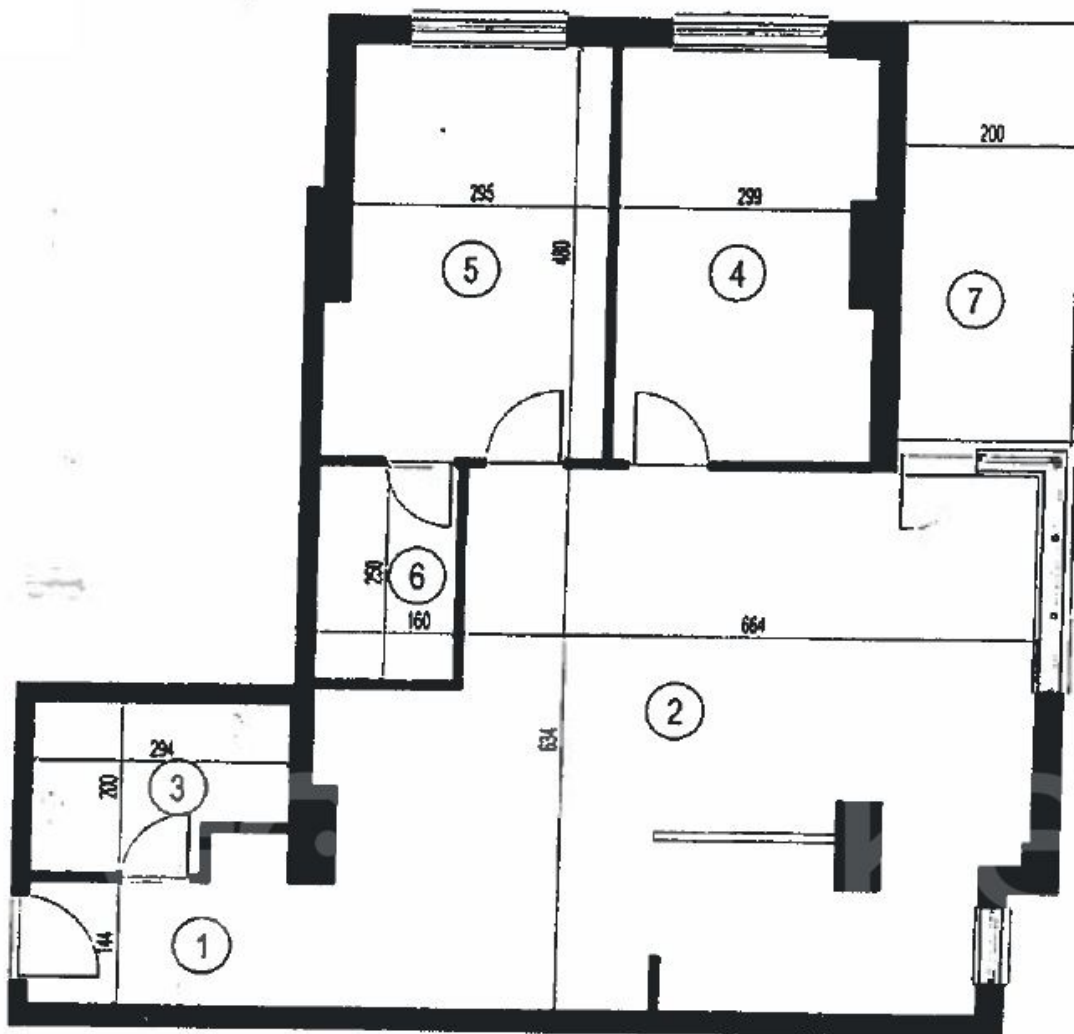
**Utilities**

air conditioning, stove, shower, bathtub, fridge, kitchen hood, washing machine, dishwasher, tv, fully furnished, radiators, central heating, open kitchen, furnished kitchen, equipped kitchen, electricity meter, underground storage, shared yard, private garden, elevator, children playground, service closet

**Property details**

Placed in a residential compound in Aviatiei area, within walking distance of Herastrau Park and Aurel Vlaicu Metro Station, this 2 bedrooms apartment is on the 4th floor of a building Ug+Gf+9 completed in 2009. It has a total area of 120sqm, 100sqm usable including 10sqm terrace. It is composed of living room with dining area and exit on the terrace, open kitchen and equipped, master bedroom with en-suite bathroom, secondary bedroom and 2nd bathroom. Includes 1 parking place in the underground garage and 1 storage room. The apartment is completely furnished and is suitable for residence.

➔ <https://ct.goldenkey.ro/en/property-modern-2-bedrooms-apartment-near-metro-station-open-view-cp2981596>



| NR. INCAPERERE         | DENUMIRE INCAPERERE | SUPRAFATA UTILA (mp) |
|------------------------|---------------------|----------------------|
| 1                      | HOL                 | 5.60                 |
| 2                      | CAMERA              | 46.55                |
| 3                      | BAIE                | 5.30                 |
| 4                      | CAMERA              | 13.90                |
| 5                      | CAMERA              | 14.70                |
| 6                      | BAIE                | 4.00                 |
| SUPRAFATA UTILA        |                     | 90.05                |
| 7                      | LOGGIE              | 9.90                 |
| SUPRAFATA UTILA TOTALA |                     | 99.95                |