

PIPERA - Modern smi-detached 6 bedrooms villa
American School

669,000 €



GENERAL INFORMATION

- 8 rooms
- level: P+2E
- construction year: 2016

AREAS

- built: 400 sqm
- usable: 230 sqm

CONTAINS

- 5 bedrooms
- 5 bathrooms

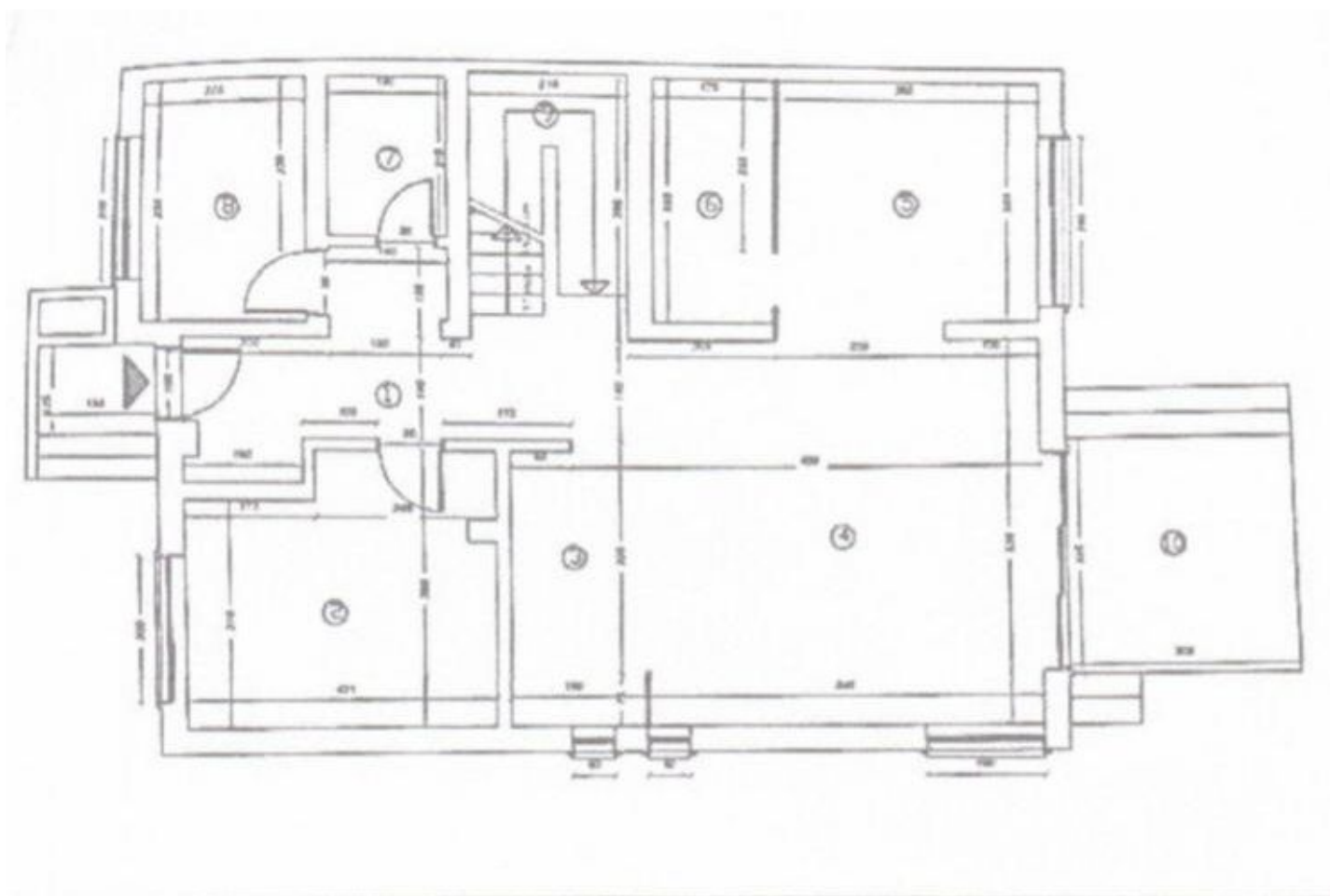
Utilities

air conditioning, stove, shower, bathtub, dressing room, fridge, kitchen hood, dishwasher, staircase, partially furnished, central heating, underfloor heating, open kitchen, furnished kitchen, equipped kitchen, electricity meter, gas meter, shared yard, private garden

Property details

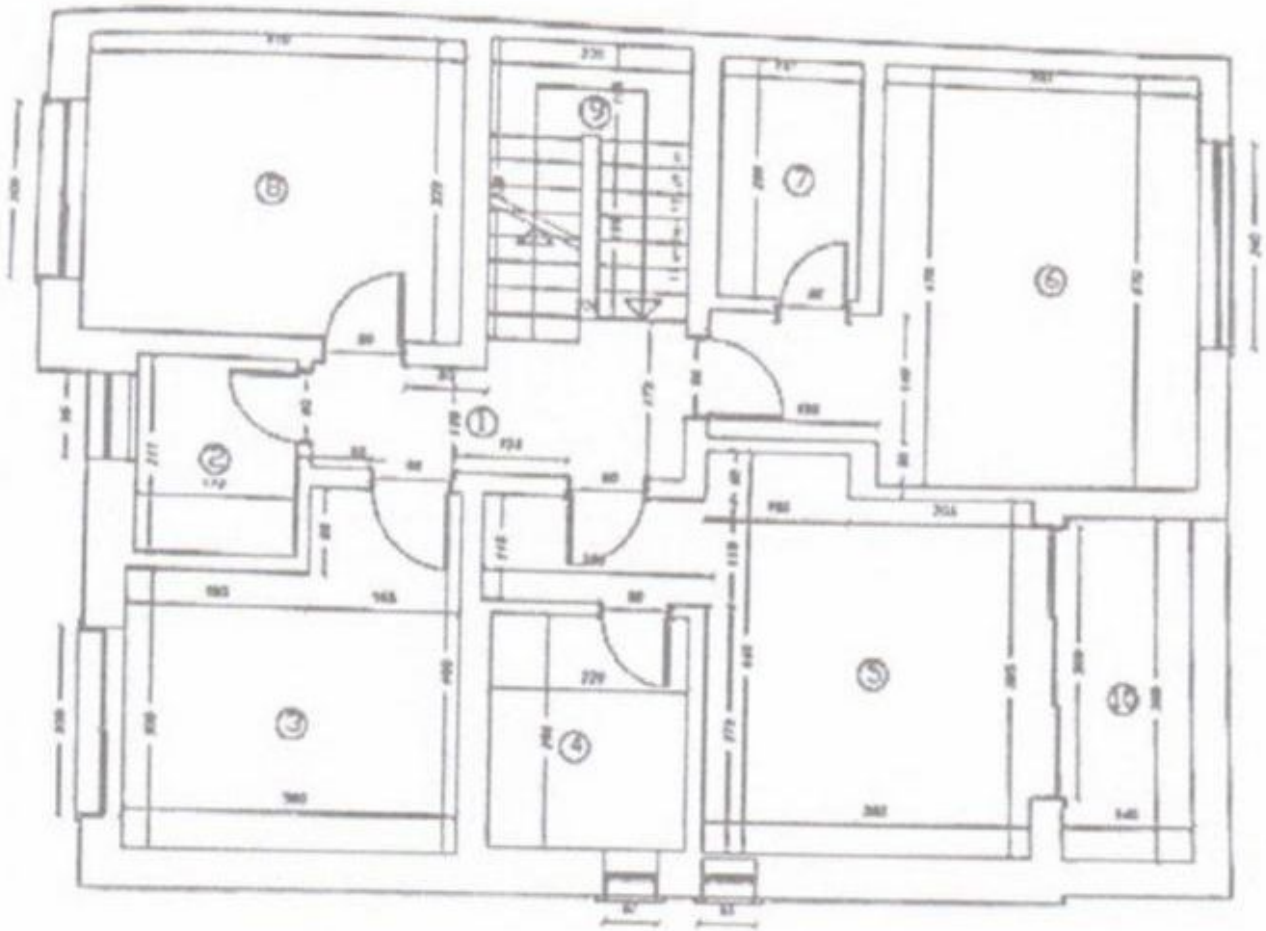
Modern villa arranged over 3 levels GF+ 2 near the American School, benefits from a generous space with modern finishes and 260sqm garden. It has a built area of 400sqm and 230sqm usable. The ground floor consists of living room with exit on the terrace, open equipped kitchen, bedroom, bathroom and technical room. On the first floor we have 2 bedrooms each with en-suite bathroom and 2 secondary bedrooms that share the 3rd bathroom. The 2nd floor 2 bedrooms, bathroom and large terrace. Up to 4 cars can be parked in the courtyard. The Villa is suitable for a family with children enrolled at the International Schools.

<https://ct.goldenkey.ro/en/property-modern-smi-detached-6-bedrooms-villa-american-school-cp3022698>



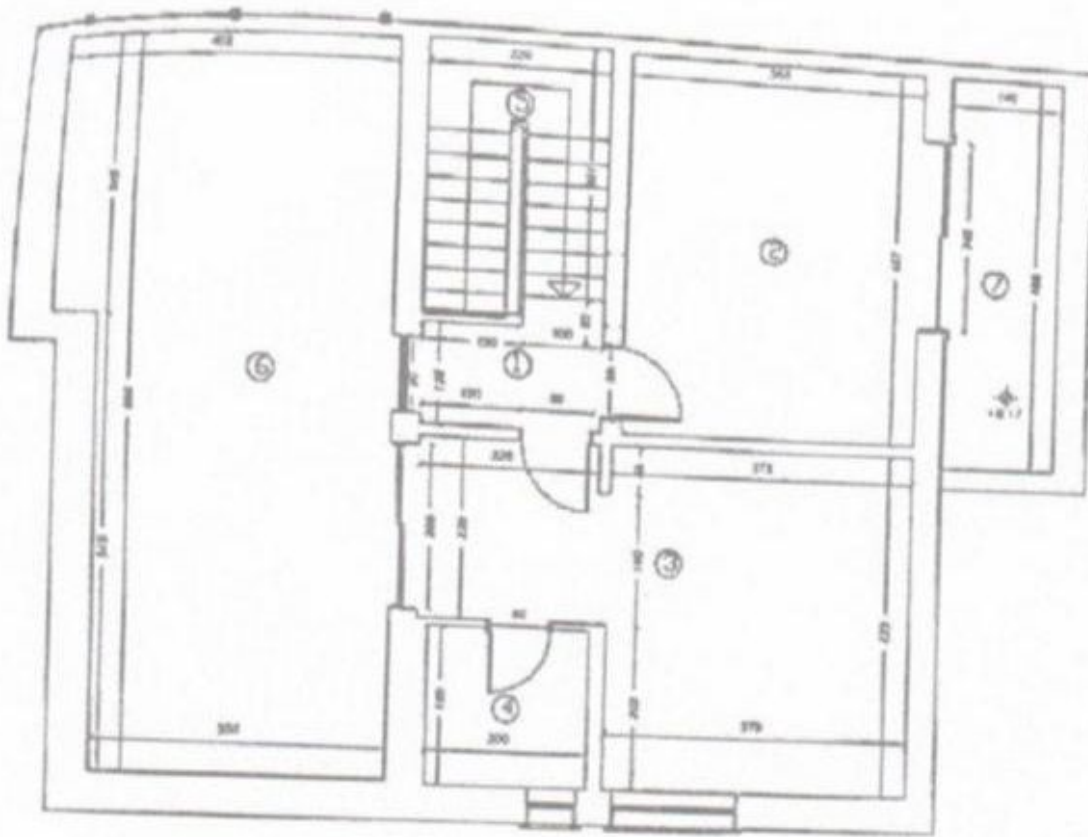
Nr. incapere	Denumire incapere	Suprafata utila (mp)
1	Hol	11.30
2	Birou	14.65
3	Depozitare	5.80
4	Camera de Zi	30.75
5	Bucatarie	12.17
6	Depozitare	5.67
7	Baie	3.45
8	Spalatorie	7.68
Suprafata Utila =		91.47 mp
9	Casa Scara	7.80
10	Terasa	3.97
Suprafata Totala =		109.24 mp
Executant,		Data
ing. Dumitrescu B Ionut		05.06.2019
Receptional,		Data





Nr. Incapere	Denumire Incapere	Suprafata utila (mp)
1	Hol	5.45
2	Baie	3.73
3	Dormitor 2	12.37
4	Baie	5.63
5	Dormitor M.	17.95
6	Dormitor 3	19.35
7	Baie	4.17
8	Dormitor 1	13.63
Suprafata Utila = 82.29 mp		
9	Casa Scari	7.25
10	Terasa	5.30
Suprafata Totala = 94.83 mp		
Executant,		Data
Ing. Dumitrascu B. Ionut		05.06.2019
Receptionat,		Data
		05.06.2019





Nr. incapere	Denumire Incapere	Suprafata utila (mp)
1	Hol	2.63
2	Camera 2	16.70
3	Camera 1	21.02
4	Baie	3.85
Suprafata Utila = 44.20 mp		
5	Casa Scarii	7.45
6	Terasa	33.05
7	Terasa	6.80
Suprafata Totala = 91.50 mp		
Executant,		Data
Ing. Dumitrascu B. Ionut		05.06.2019
Receptionat,		Data
Oficial de Contract OPRIS N.T. DORNEANU Consilier		06 SEP. 2019

