

HERASTRAU - Park View! 4 bedrooms, 4 baths| premium building  
South-West

**1,478,745 €**



**GENERAL INFORMATION**

- 5 rooms
- level: 5 / 2S+P+12E
- construction year: 2018

**AREAS**

- built: 291 sqm
- usable: 200 sqm

**CONTAINS**

- 4 bedrooms
- 4 bathrooms

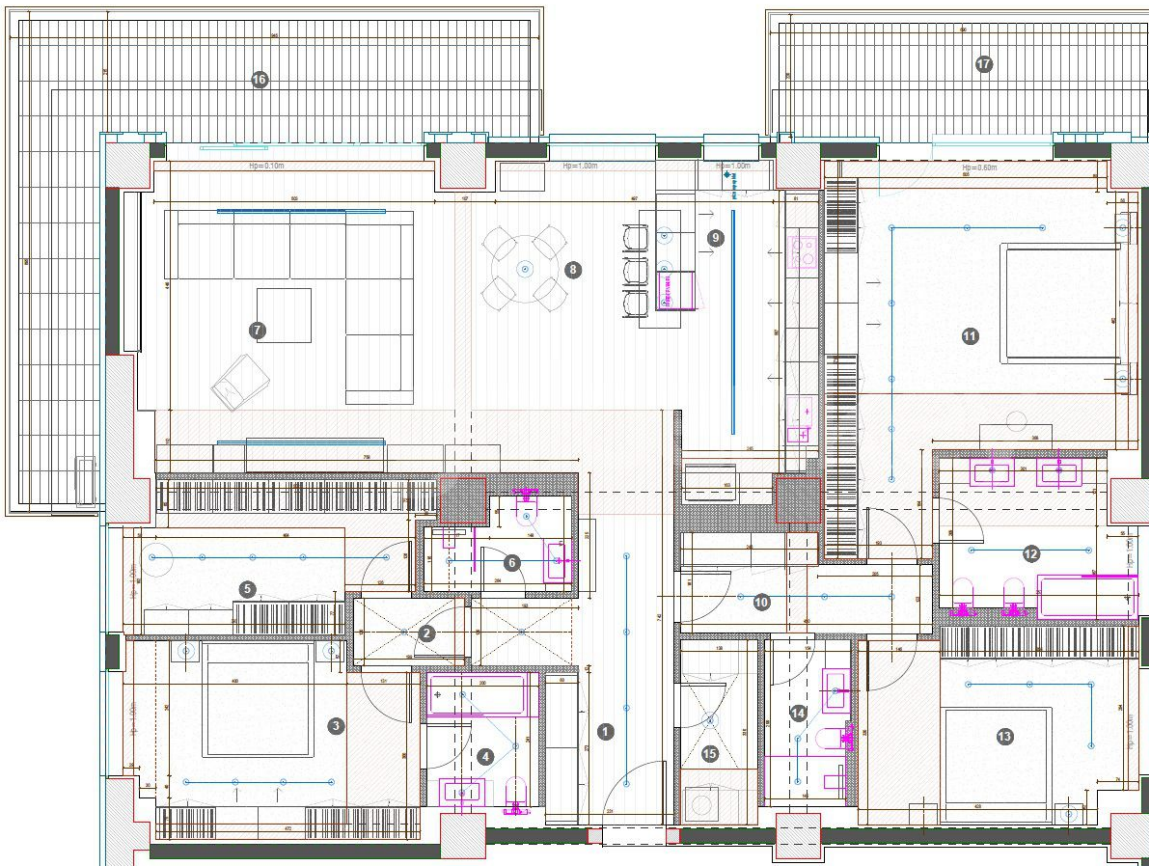
**Utilities**

air conditioning, stove, bidet, shower, bathtub, dressing room, fridge, kitchen hood, washing machine, dishwasher, partially furnished, radiators, central heating, underfloor heating, water meters, heating meter, electricity meter, shared yard, elevator, sauna

**Property details**

Located in the premium Northern Area, near Herastrau Park, with panoramic views over the Herastrau, this high quality residential project is composed of one building with 14 levels, 2Ug+Gf+11. It is sunny all day because of the South-West orientation. The total built area is 291sqm, 200sqm usable and 52sqm terraces. It has ample living area of 52sqm, terrace, 15sqm kitchen, 33sqm master bedroom with terrace and en-suite bathroom and 3 secondary bedrooms (16/17/18sqm) with 3 bathrooms. Finishes are high quality (ventilated facade, windows with tripan and aluminum frames Wicono, underfloor heating, Daikin multi-split air conditioners, Italian Atlas Concorde ceramics, Villeroy & Boch and Grohe sanitary). Considering the green area, the proximity of the Barbu Vacarescu - Floreasca business area, the spectacular views and the overall quality of this project, it is the best option for investment.

<https://ct.goldenkey.ro/en/property-park-view-4-bedrooms-4-baths-premium-building-south-west-cp373647>



APARTAMENT		
1. HOL 1		12.14 mp
2. HOL 2		4.59 mp
3. DORMITOR 1		17.87 mp
4. BAIE 1		4.32 mp
5. DRESSING DORMITOR 1		16.51 mp
6. BAIE 2		3.89 mp
7. LIVING		31.54 mp
8. DINING		19.91 mp
9. BUCATARIE		13.57 mp
10. HOL 3		5.94 mp
11. DORMITOR MATRIMONIAL		32.35 mp
12. BAIE MATRIMONIALA		10.29 mp
13. DORMITOR 2		16.29 mp
14. BAIE 3		4.47 mp
15. SPATIU DEPOZITARE		4.56 mp
Suprafata utila = 206.23 mp		
Suprafata construita fara terase = 241.76 mp		
16. TERASA 1		28.45 mp
17. TERASA 2		13.36 mp
Suprafata construita totala = 283.60 mp		

PLAN SUPRAPUNERE	
<b>LEGENDA</b>	
	PERETI
	MOCHETA
	PARCHET
	PLAFOANE

ELECTRICE PLAFOANE & CORPURI DE ILUMINAT	
	ALINEARE LUMINI
	SPOT RACORDAT
	CORP ILUMINAT SUPENDAT DECORATIV
	RACORDURI ELECTRICE PLAFON
	SINA SPOTURI