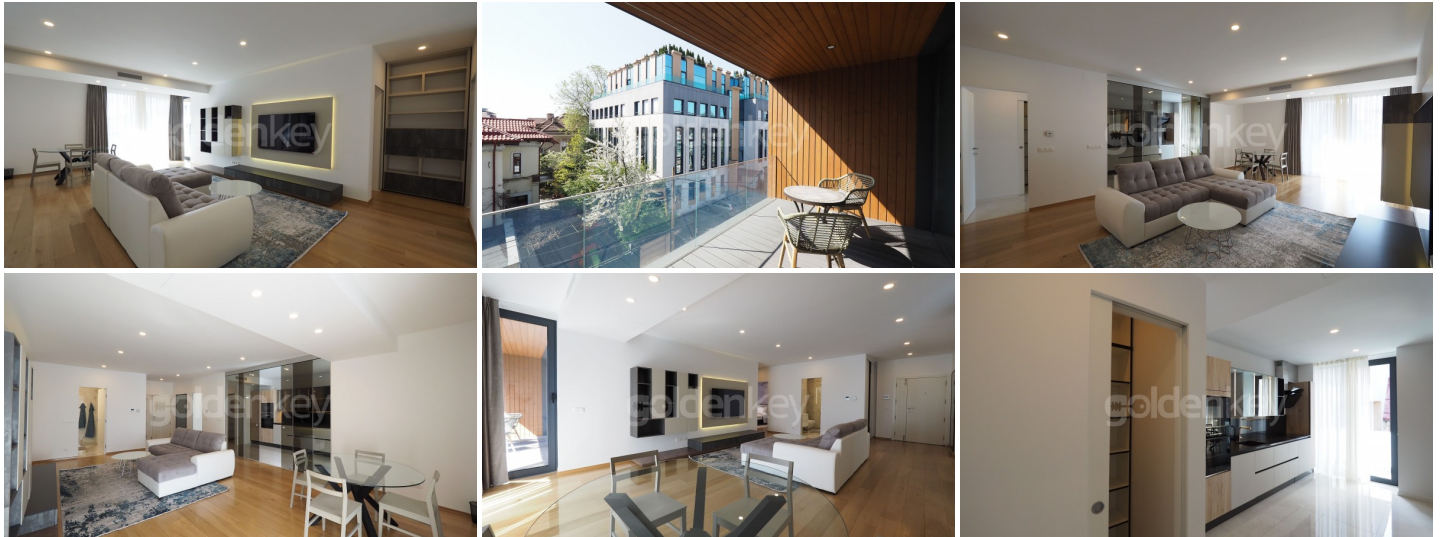


KISELEFF - Premium 2 bedrooms apartment
quiet area

660,000 €



GENERAL INFORMATION

- 3 rooms
- level: 2 / 2S+P+5E
- construction year: 2021

AREAS

- built: 135 sqm
- usable: 102 sqm

CONTAINS

- 2 bedrooms
- 2 bathrooms

Utilities

air conditioning, stove, shower, bathtub, dressing room, fridge, kitchen hood, washing machine, dishwasher, tv, fully furnished, luxury furnished, central heating, underfloor heating, closed kitchen, furnished kitchen, equipped kitchen, water meters, electricity meter, underground storage, elevator

Property details

Located in Kiseleff area, a short walk from Herastrau and Kiseleff Parks, this 2 bedrooms apartment is on the 2nd floor of a 2Ug+Gf+5 premium building completed in 2021. It has a built area of 135sqm of which 102sqm usable and 15sqm terrace. It consists of spacious living room with dining area and exit on the terrace, closed and fully equipped kitchen, master bedroom with en-suite bathroom and dressing area, secondary bedroom and secondary bathroom. It has good quality furniture and modern finishes. Can be purchased 1 underground parking place and 1 storage for 30.000 euro+VAT. Considering the location and facilities offered, it is one of the best residential options.

<https://ct.goldenkey.ro/en/property-premium-2-bedrooms-apartment-quiet-area-15sqm-terrace-cp1480519>

