

CISMIGIU - Ultra-Central
Bohemian villa S+P

690,000 €



GENERAL INFORMATION

- 7 rooms
- level: 1S+P
- construction year: 1940

AREAS

- built: 380 sqm
- usable: 313 sqm

CONTAINS

- bedrooms
- 2 bathrooms

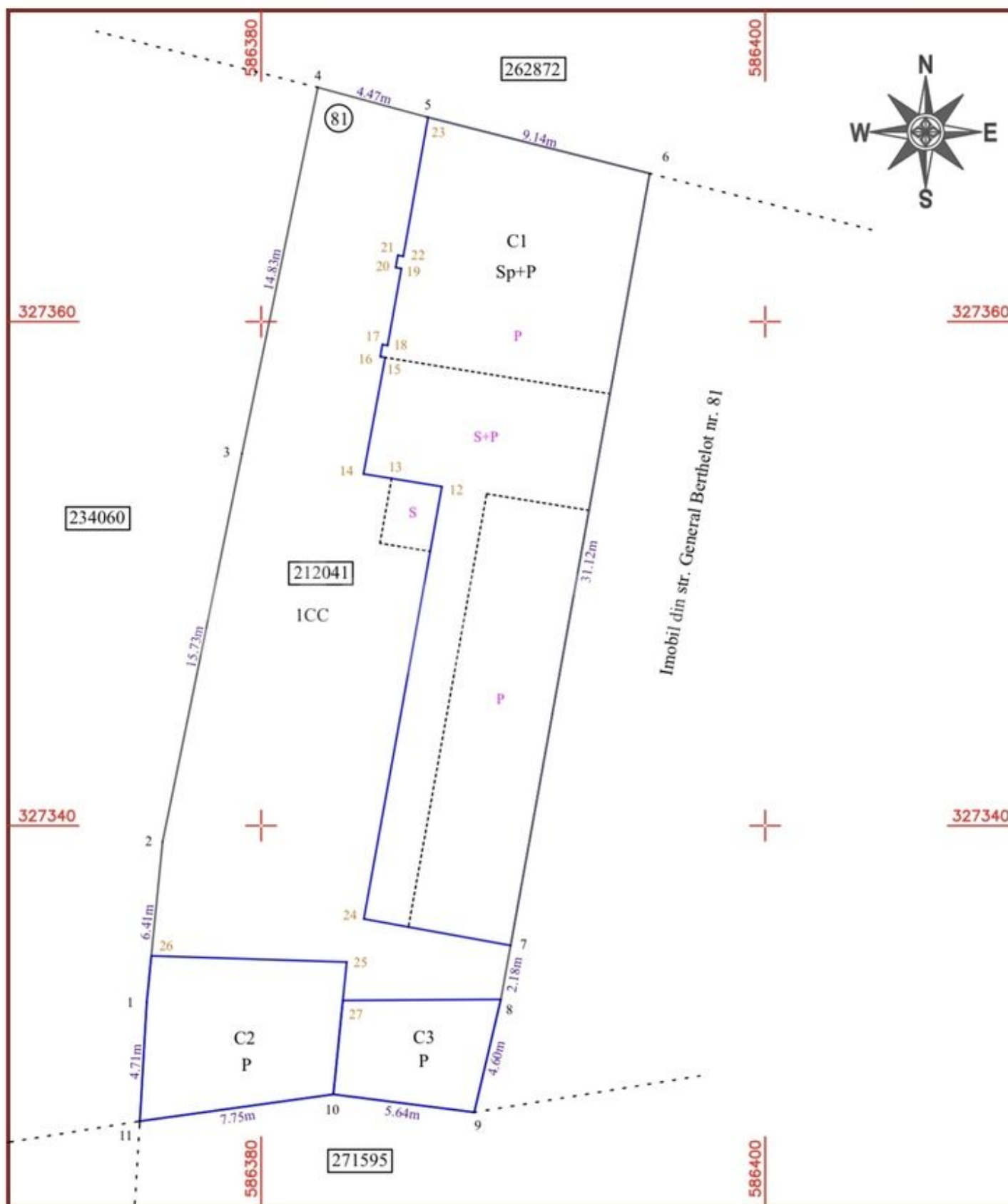
Utilities

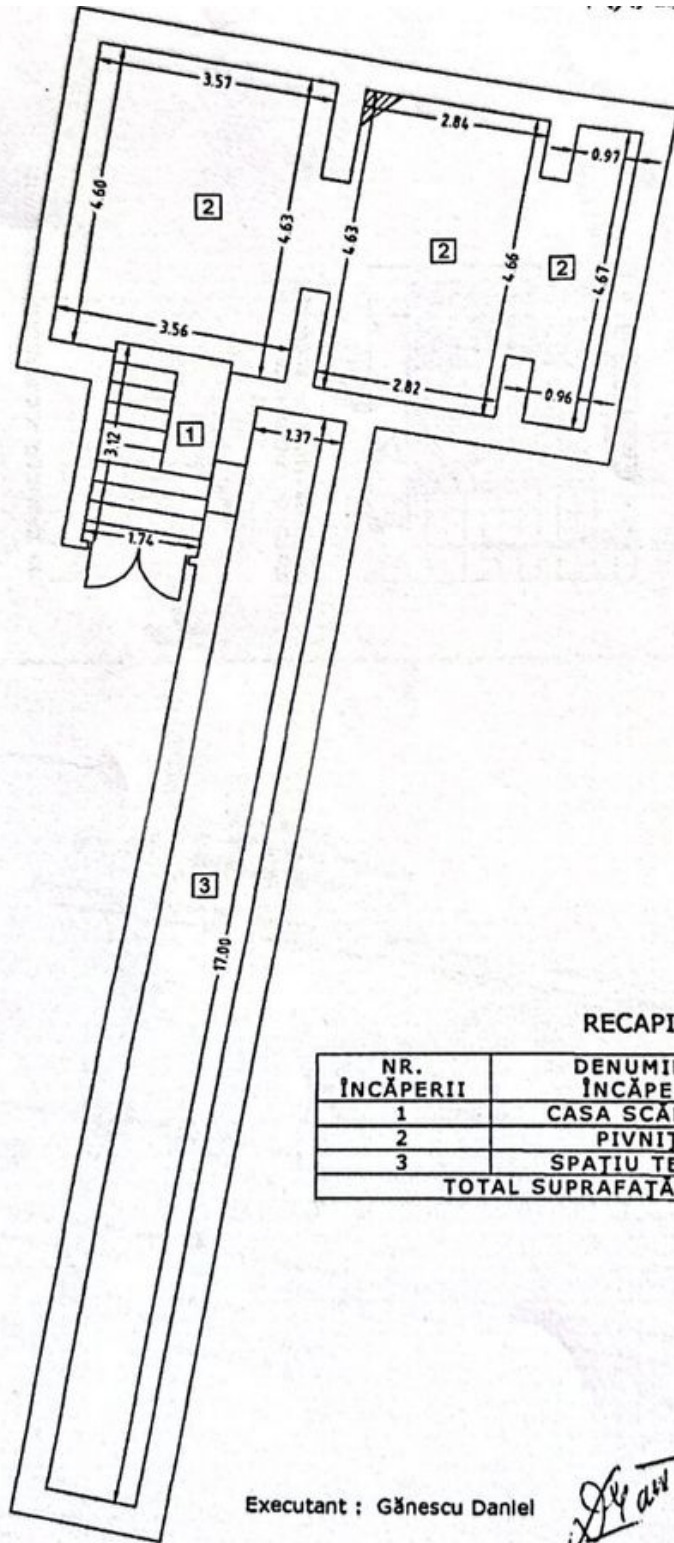
teracotta, water meters, heating meter, electricity meter, gas meter, yard, private garden, cellar

Property details

A few steps from Cismigiu Park and Calea Victoriei, this individual house S+P is built in 1940 and is located in a protected urbanistic perimeter (it is not a historical monument). It has a land plot of 548 sqm and a total built area of 380sqm of which 242sqm usable plus annexes (garages and shed) of 71sqm. Features: • Original terracotta stoves • Solid wood interior joinery • Solid wood flooring in most rooms • All utilities connected: water, gas, electricity, sewerage • Secondary staircase to the attic (the attic covers the entire surface of the house) • Basement of about 65 sqm with brick vaults The house needs a complete renovation to be able to be inhabited, but it retains original elements that can be used in a rehabilitation project. Given the ultra-central location, it can have residential and commercial use.

<https://ct.goldenkey.ro/en/property-ultra-central-bohemian-villa-s-p-300mpc-land-550sqm-cp2663467>





RECAPITULĂȚIE

NR. ÎNCĂPERII	DENUMIREA ÎNCĂPERII	SURAFĂȚA UTILĂ [mp]
1	CASA SCĂRILOR	5.40
2	PIVNIȚĂ	35.66
3	SPATIU TEHNIC	23.29
TOTAL SUPRAFAȚĂ		64.35

Executant : Gănescu Daniel

27.02.2005