

FLOREASCA - Ultra-modern villa with heated pool
7 rooms, 6 bathrooms



GENERAL INFORMATION

- 7 rooms
- level: D+P+2E
- construction year: 2000

AREAS

- built: 720 sqm
- usable: 420 sqm

CONTAINS

- 5 bedrooms
- 6 bathrooms

Utilities

air conditioning, stove, bidet, shower, bathtub, dressing room, outdoor shower facilities, fridge, kitchen hood, jacuzzi, washing machine, dishwasher, staircase, fireplace, alarm system, tv, fully furnished, luxury furnished, partially furnished, unfurnished, radiators, central heating, fan coil units, open kitchen, closed kitchen, furnished kitchen, partially equipped kitchen, water meters, heating meter, electricity meter, gas meter, yard, sports facilities, private garden, elevator, service closet, barbeque area

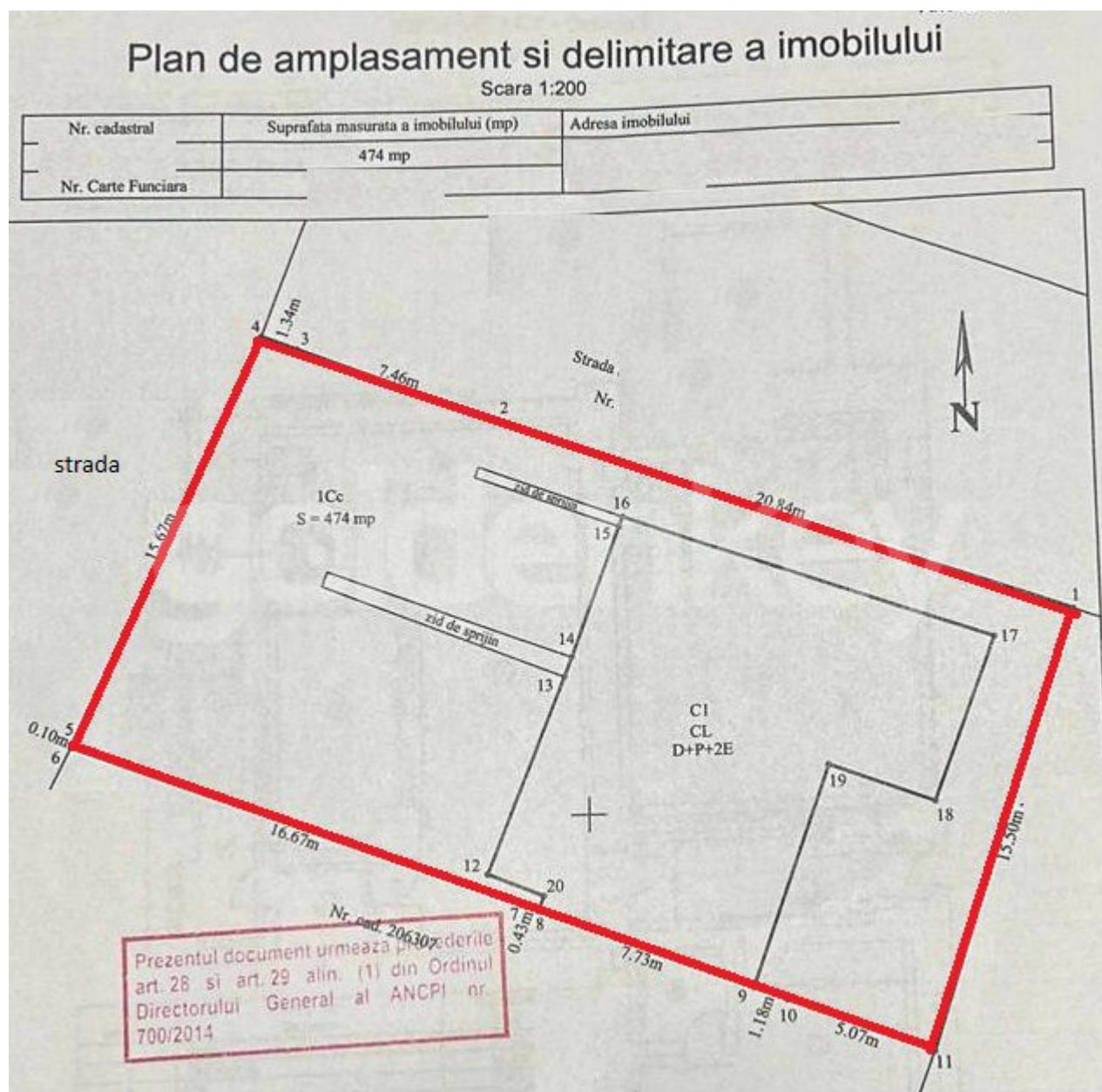
Property details

Located on the shore of Floreasca Lake, a few steps from Primaverii and Promenada Mall, this ultra-modern villa unfolds on 5 levels, GF+3+Roof Terrace. It benefits from the heated outdoor pool, elevator, generous spaces and large glazed surfaces that facilitate the view of the lake. It has 7 rooms (5 bedrooms) and 6 bathrooms, a total area of 720sqm built of which 420sqm usable plus terraces of 200sqm, on a plot of land of 474sqm. On the first floor it has fully equipped kitchen, dining room, bedroom with en-suite bathroom, laundry, bathroom, garage and technical room. The next floor has a generous 70sqm living room with fireplace and an equipped gym. The 1st floor consists of 2 secondary bedrooms (34/26sqm) with generous bathrooms and en-suite dressing rooms. On the 2nd floor is the matrimonial area of 80sqm with big bedroom, terrace, 2 dressing rooms and 2 bathrooms (his&her's). The lounge terrace on the upper level is perfect for relaxing or partying, accompanied by gorgeous views over the lake and city. The building benefits from top finishes and furnishings: natural stone, smart home and Aster & Poliform Italia furniture. Given the unrepeatable location, the quality of the arrangement and the generous spaces, it is the perfect residence in the heart of the city but surrounded by nature.

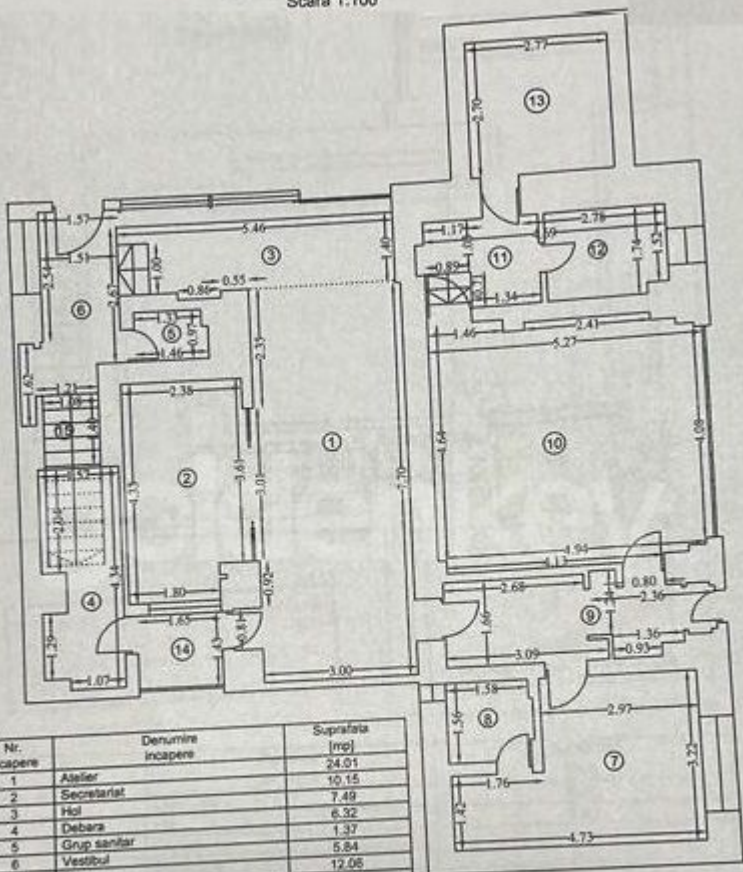
➔ <https://ct.goldenkey.ro/en/property-ultra-modern-villa-with-heated-pool-7-rooms-6-bathrooms-700sqm-lake-view-cp1788051>

GoldenKey Premium Real Estate | Bringing you home... since 2006

73 Aron Cotrus St., Bucharest 1 | Phone: +4 021 795 00 95 | Email: office@goldenkey.ro
www.goldenkey.ro | www.herastraupark.ro | www.gdk.properties



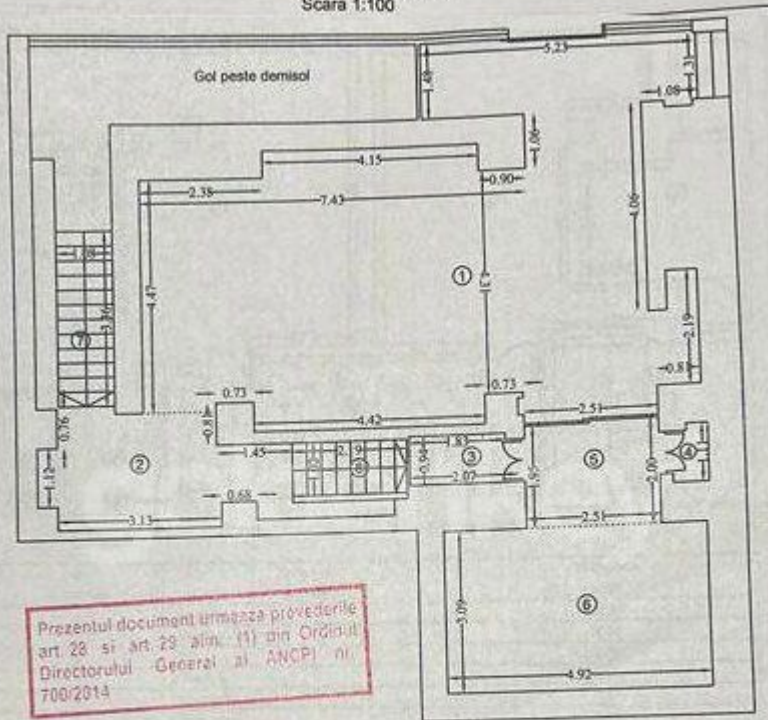
RELEVÉU C1 - Demisol
Scara 1:100



Nr. incapere	Denumire incapere	Suprafata [mp]
		24.01
1	Atelier	10.15
2	Secretariat	7.49
3	Hol	6.32
4	Debara	1.37
5	Grup sanitar	5.84
6	Vestibul	12.08
7	Birou	2.52
8	Grup sanitar	7.70
9	Hol	24.92
10	Garaj	3.98
11	Hol	
Suprafata Utila=106.36mp		
12	Centrale termica	3.98
13	Adapost aparare civila	7.48
14	Terasa	2.36
15	Terasa Acari	1.51
Suprafata Totala=121.69mp		
Data:		
09.2019		

Prezentul document urmeaza preved
art 26 si art 29 alin. (1) din Ord
Directorului General al ANCP
700/2014

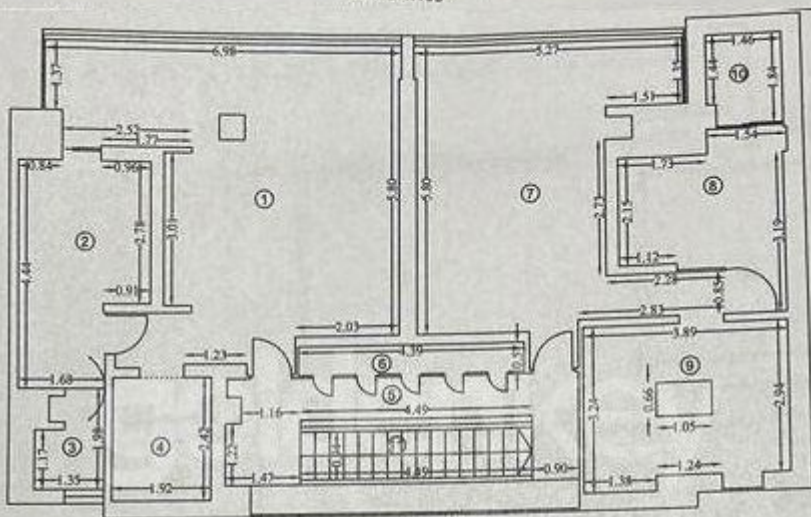
RELEVU C1 - Parter
Scara 1:100



Prezentul document atestaza prevederile art 28 si art.29 alin. 11) din Ordinul Directorului General al ANCP nr. 700/2014

Nr. Incapere	Denumire Incapere	Suprafata [mp]
1	Living room	60.00
2	Hol	9.24
3	Depozitare	1.91
4	Depozitare	0.75
Suprafata Utila=71.90mp		
5	Terasa	4.97
6	Jardiniera	15.20
7	Casa scari	3.63
8	Casa scarii	2.23
Suprafata Totala=97.93mp		
Executant,		Data,
		09.2019

RELEVU C1 - Etaj 1
Scara 1:100

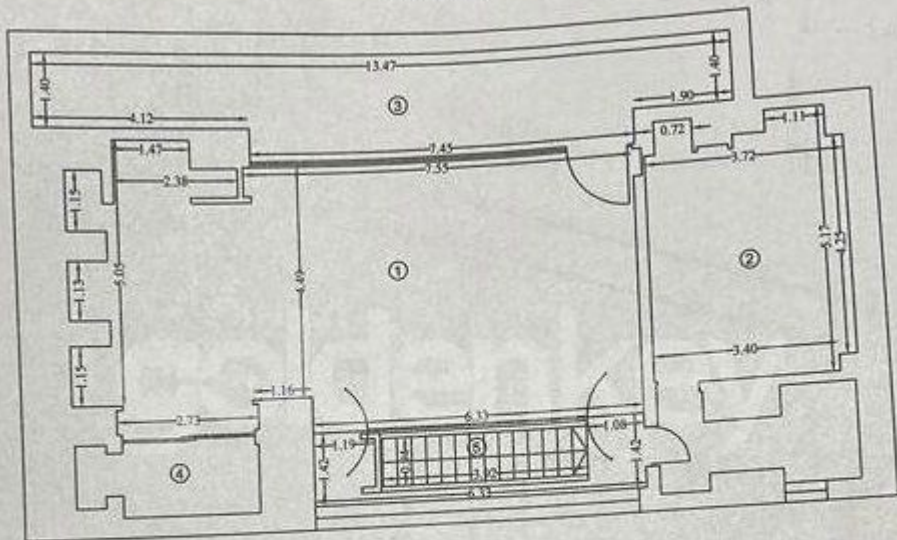


Nr. Incapere	Denumire Incapere	Suprafata [mp]
1	Dormitor	33.94
2	Grup sanitar	9.84
3	WC	2.36
4	Dressing	4.65
5	Hol scara	8.53
6	Depozitare	2.50
7	Dormitor	26.25
8	Grup sanitar	8.93
9	Dressing	11.38
Suprafata Utila=106.38mp		
10	Terasa	2.65
11	Casa scari	4.22
Suprafata Totala=116.25mp		
Executant,		Data,
		09.2019

GoldenKey Premium Real Estate | Bringing you home... since 2006

73 Aron Cotrus St., Bucharest 1 | Phone: +4 021 795 00 95 | Email: office@goldenkey.ro
www.goldenkey.ro | www.herastraupark.ro | www.gdk.properties

RELEVU C1 - Etaj 2
Scara 1:100



Nr. incapere	Denumire incapere	Suprafata [mp]
1	Birou studiu	55.04
2	Camera depozitare	23.70
Suprafata Utila=78.74mp		
3	Jardiniera	23.69
4	Terasa	4.77
5	Casa scarii	8.99
Suprafata Totala=116.19mp		
Executantul,		Data,
		09.2019