

**FLOREASCA - Verdi Park**  
4 Rooms

**1,128,000 €**



**GENERAL INFORMATION**

- 4 rooms
- level: 3 / 2S+P+5E
- construction year: 2023

**AREAS**

- built: 216 sqm
- usable: 128 sqm

**CONTAINS**

- 3 bedrooms
- 3 bathrooms

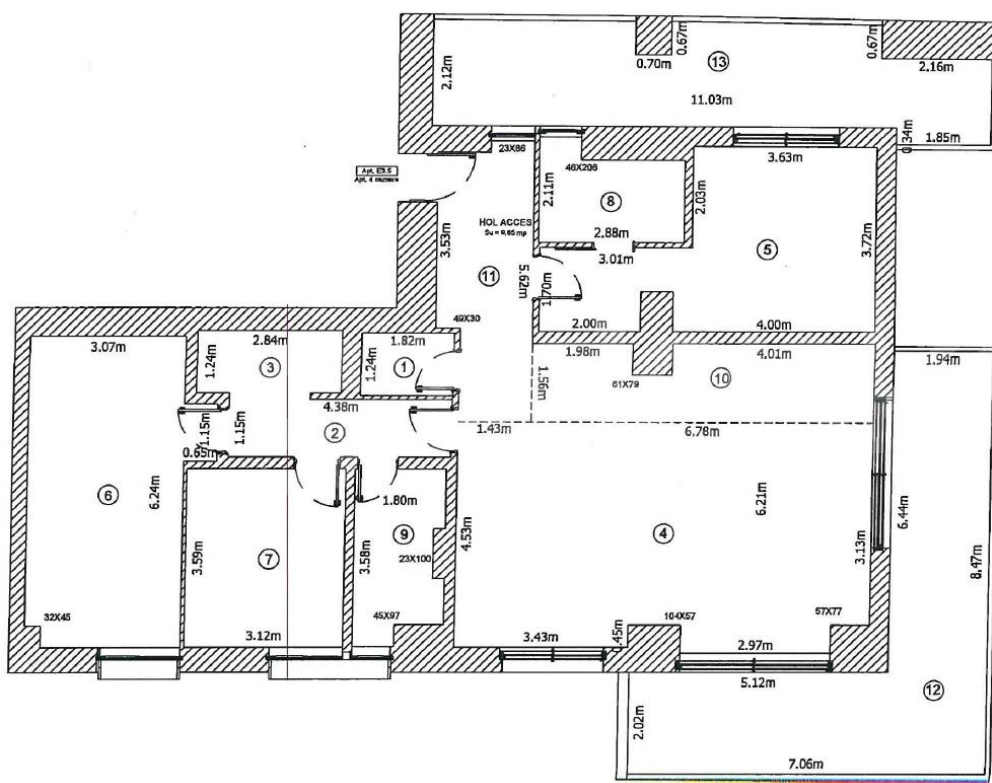
**Utilities**

air conditioning, central heating, underfloor heating, water meters, heating meter, electricity meter, gas meter, elevator, service closet

**Property details**

On the shores of Lake Floreasca, with spectacular views of it, the building 2Ug + Gf + 5 consists of 35 residential units with 2-6 rooms divided by 2 stairs. The apartments have large glazed surfaces, lake views, generous surfaces and are sunny due to the south-east-west orientation. Located on the 3rd floor, with ample view to the park and lake, this apartment has a built area of 216sqm of which 127sqm usable and 50sqm terrace. It consists of a generous living room with dining area, open kitchen with exit on the terrace, toilet, master bedroom with private bathroom and dressing room, and a secondary bedroom with bathroom. The finishing and materials used are top (aluminum joinery, ventilated façade, underfloor heating) from industry leading manufacturers. The unique location on the lakeside, the exceptional quality of the construction and proximity of the Floreasca office pole-Promenade Mall-Aurel Vlaicu, modern facilities, make the residential experience at the highest level.

<https://ct.goldenkey.ro/en/property-verdi-park-4-rooms-floreasca-lake-view-216sqm-cp767274>



Nr. incapere	Denumire incapere	Suprafata utila (mp)
1	Gr. sanitar	2.3
2	Hol	5.0
3	Dressing	3.5
4	LIVING + DINNING	38.8
5	Dormitor 1	18.1
6	Dormitor 2	19.8
7	Dormitor 3	11.2
8	Baie 1	5.1
9	Baie 2	5.8
10	Bucatarie	10.0
11	Hol acces	9.6
Suprafata Utila = 127.2 mp		
12	Terasa	26.8
13	Terasa	21.9
Suprafata Totala = 175.9 mp		
Suprafata construita = 157 mp		
<b>Executari</b>		<b>Data</b>
Aut.Sena KU-MD-F-Ni. v. 100		Ian 2026
Receptionat,		Data

Suprafata construita terasa = 56 mp